

# Midwest Homes Lots

## The Willows II

All of Lot 4 of CSM 6407 being part of the NW 1/4 of the NW 1/4 and part of the SW 1/4 of the NW 1/4 of Section 21, T07N, R08E, City of Madison, Dane County, Wisconsin

There are no objections to this plat with respect to Secs. 236.15, 236.16, 236.20 and 236.21(1) and (2), Wis. Stats. as provided by s. 236.12, Wis. Stats.

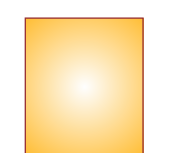
Certified \_\_\_\_\_, 20\_\_\_\_

Department of Administration

### LEGEND



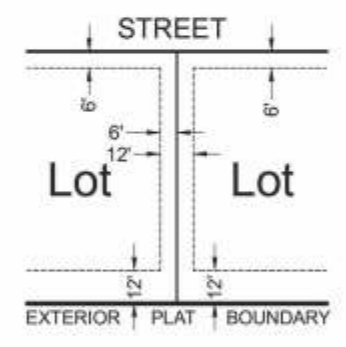
MIDWEST HOMES AVAILABLE LOTS



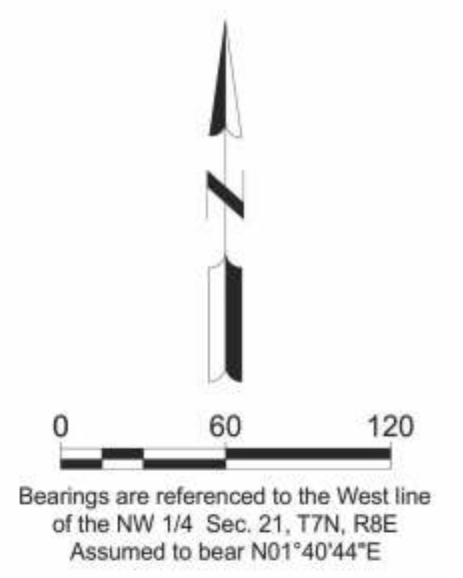
MODEL HOME



CONTRACT PENDING



TYPICAL NON-EXCLUSIVE EASEMENT FOR UTILITY PURPOSES STANDARD WIDTHS EXCEPT AS SHOWN AND NOTED ON THE FACE OF THE PLAT



June 16, 2016

## Mead & Hunt

Mead & Hunt, Inc.  
2440 Deming Way  
Middleton, WI 53562  
phone: 608-273-6380  
meadhunt.com  
SHEET 1 OF 2

